

PW/CF PIPE WARMER COLOR BOX COMBO
TECHNICAL SPECIFICATIONS

COLOR BOX

-208VAC 1ph, 4.2kW, 20A

-Max Temp: 1100°F

-Weight 250

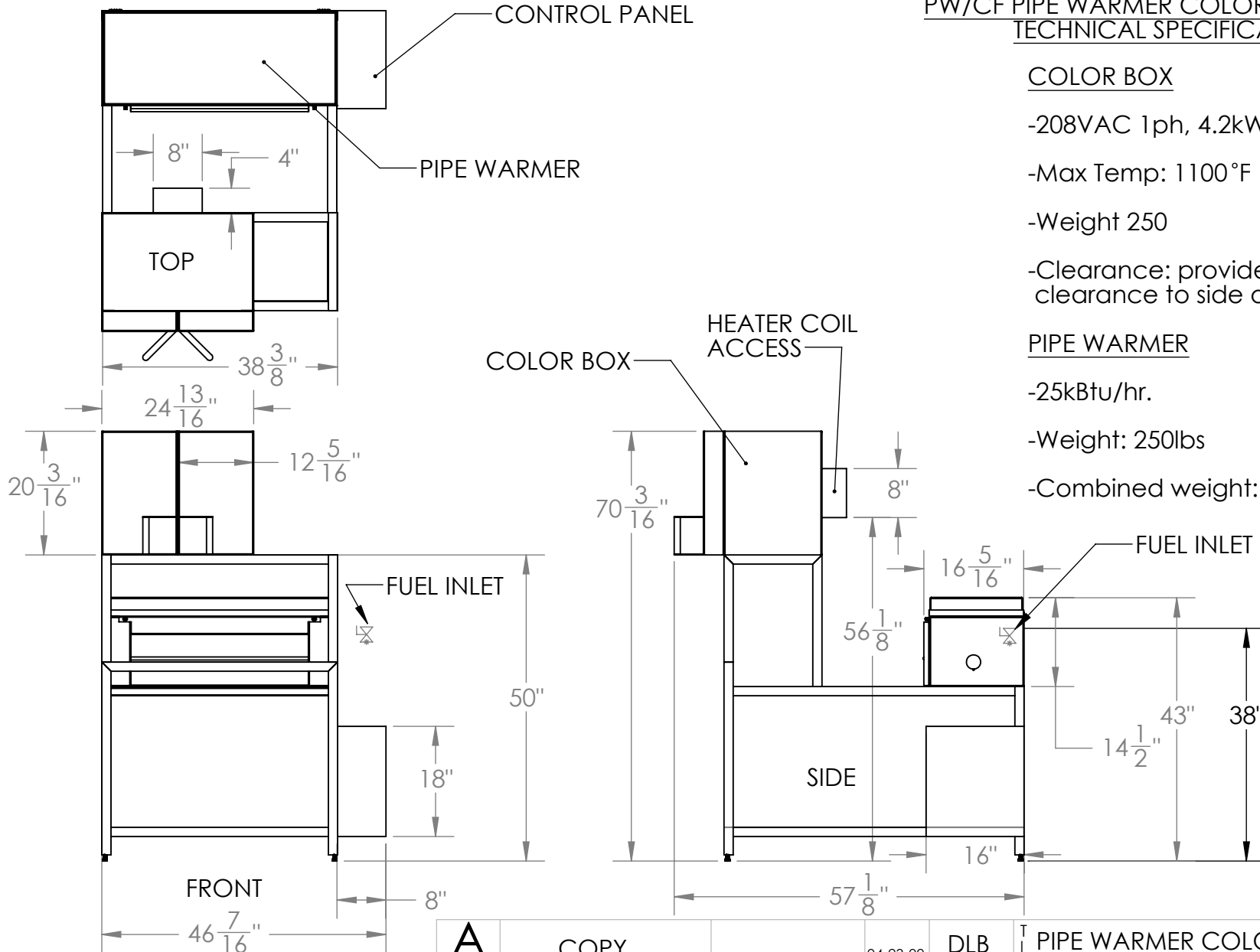
-Clearance: provide at least 36" clearance to side of control panel

PIPE WARMER

-25kBtu/hr.

-Weight: 250lbs

-Combined weight: 500lbs



A	COPY	SCALE: 1:32	04-23-09	DLB
	REV			

PROPRIETARY STATEMENT
 THIS DESIGN IS COPYRIGHT PROTECTED. ANY UNAUTHORIZED FABRICATION AND SALE OF THIS PRODUCT OR ITS DESIGN IS STRICTLY PROHIBITED, AND VIOLATORS WILL BE PROSECUTED TO THE FULL EXTENT OF THE LAW.

100-C RUSSELL DR.
 STAR, N.C. 27356
 P.O. BOX 96
 Ph. 910-428-4111
 Fx. 910-428-4123



PIPE WARMER COLOR BOX COMBO
 PW/CF

TOLERANCES: FRACTIONS= ± 1/16", .X= ±.1, .XX= ±.03, .XXX= ±.005, ANGLES= ± 1DEG.

PW-CF COMBO PURCHASE SPECS