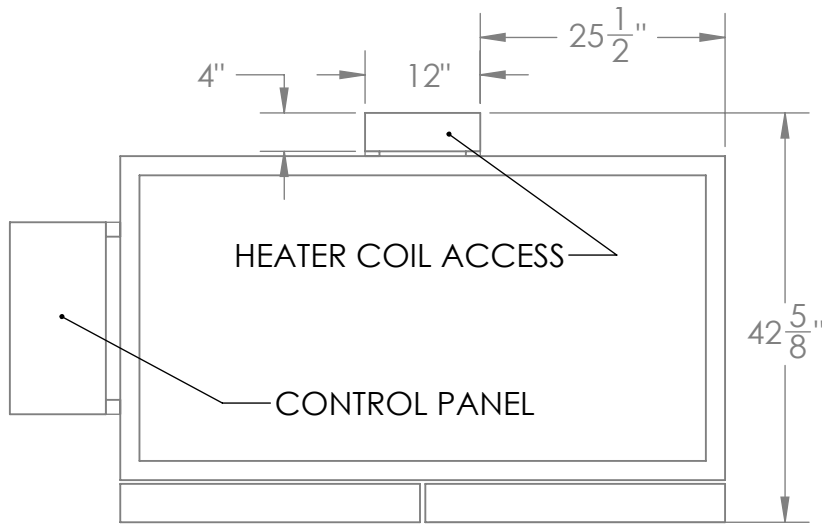


AF-28.3 FRONT LOADING ANNEALER TECHNICAL SPECIFICATIONS



TOP

- 16.6kW (Please Specify Voltage)
- Electrical Configurations Include
 - 240 single phase 70 amps
 - 208VAC 3phase, 46 amps,
 - 240VAC 3 phase, 40 amps,
 - 480VAC 3 phase, 20 amps.

-Maximum Temperature: 1,000F

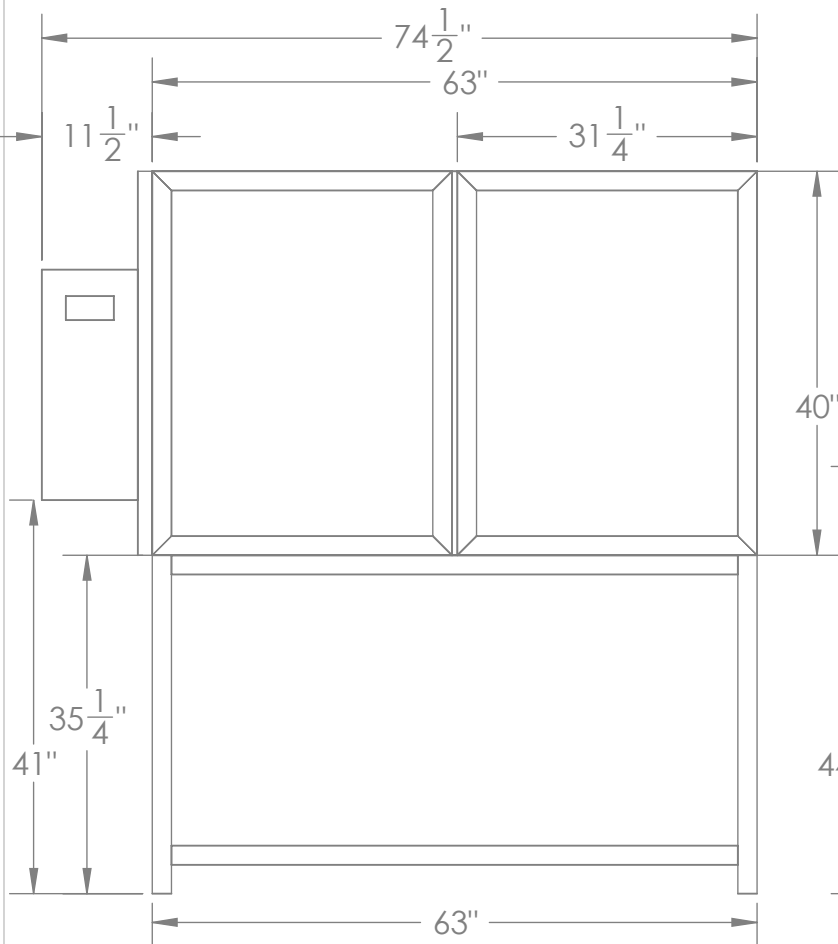
-Weight: 1,000 lbs

-Shipping Weight: 1,300 lbs

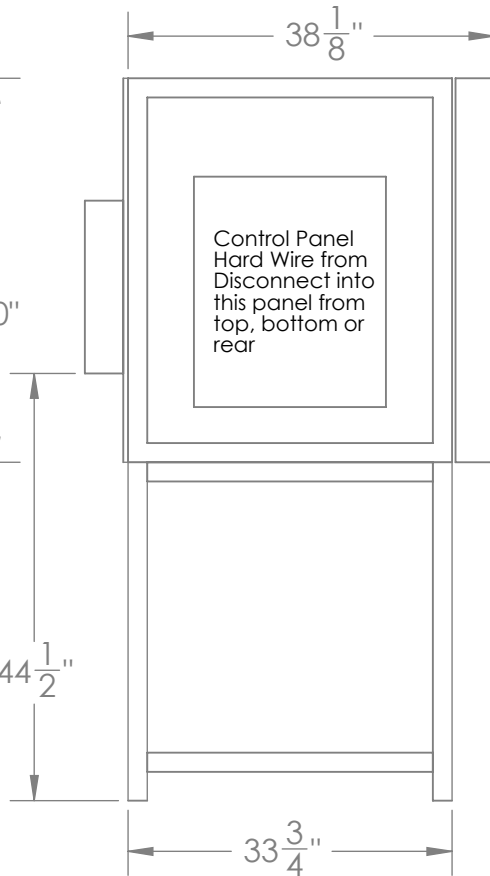
-Clearance: Provide 36" clearance to side of control panel, and 36" clearance to rear of oven heater coil access.

-Exceptions: If fused disconnect is within 6 feet of oven and connected with flexible conduit, oven may be moved away from wall for servicing rear heater coil access.

-Inside Dimensions: 53.5"W x 29"D x 31.5"H



FRONT

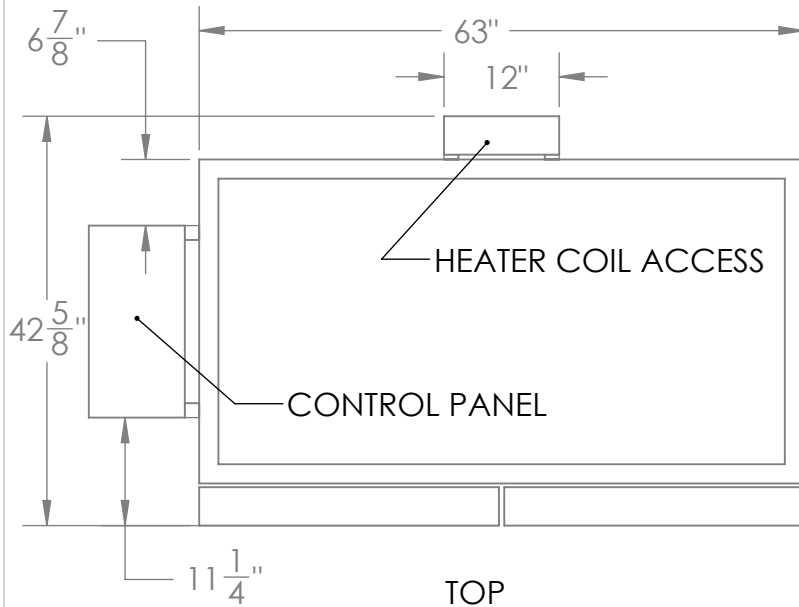


SIDE LH

Control Panel
Hard Wire from
Disconnect into
this panel from
top, bottom or
rear

A REV	COPY	SCALE: 1:20	04-22-09 DATE	DLB DRAWN BY	T I T L E	FRONT LOADING ANNEALER
	SHEET 1 OF 3					AF 28.3 STANDARD
<p>PROPRIETARY STATEMENT</p> <p>THIS DESIGN IS COPYRIGHT PROTECTED. ANY UNAUTHORIZED FABRICATION AND SALE OF THIS PRODUCT OR ITS DESIGN IS STRICTLY PROHIBITED, AND VIOLATORS WILL BE PROSECUTED TO THE FULL EXTENT OF THE LAW.</p>		<p>100-C RUSSELL DR. STAR, N.C. 27356 P.O. BOX 96 Ph. 910-428-4111 Fx. 910-428-4123</p>	 <p>WET DOG GLASS</p>	<p>TOLERANCES: FRACTIONS= ± 1/16", .X= ±.1, .XX= ±.03, .XXX= ±.005, ANGLES= ± 1DEG.</p>		
						D W G
						AF 28.3 PURCHASE SPECS

AF-28.3 FRONT LOADING ANNEALER TECHNICAL SPECIFICATIONS



-16.6kW (Please Specify Voltage)
Electrical Configurations Include
-240 single phase 70 amps
-208VAC 3phase, 46 amps,
-240VAC 3 phase, 40 amps,
-480VAC 3 phase, 20 amps.

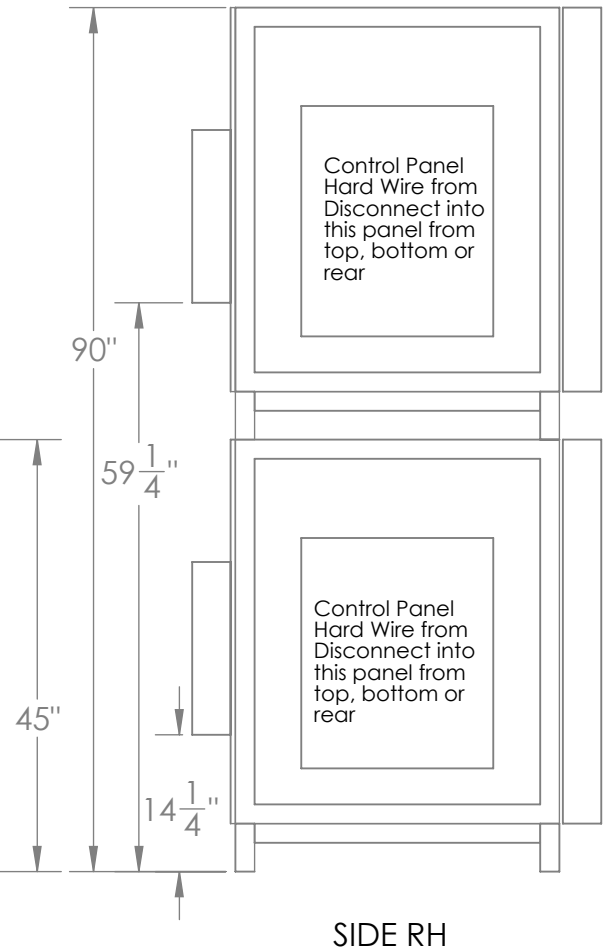
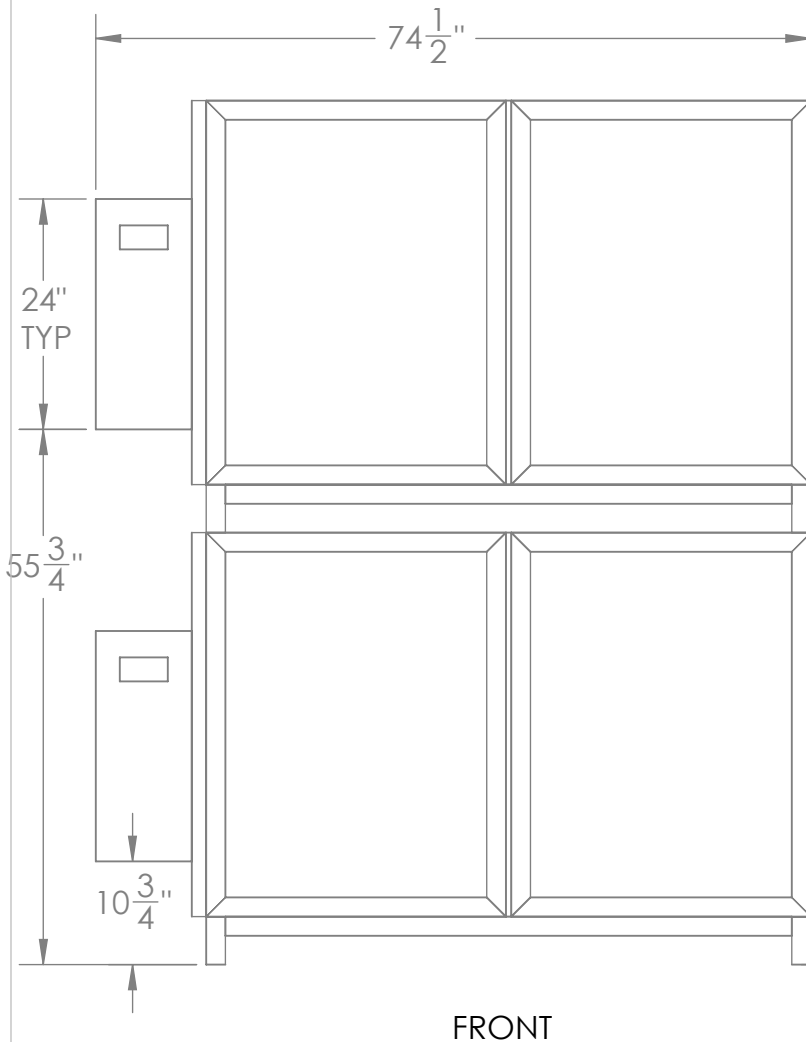
-Maximum Temperature: 1,000F

-Weight: 1,000 lbs
-Shipping Weight: 1,300 lbs

-Clearance: Provide 36" clearance to side of control panel, and 36" clearance to rear of oven heater coil access.

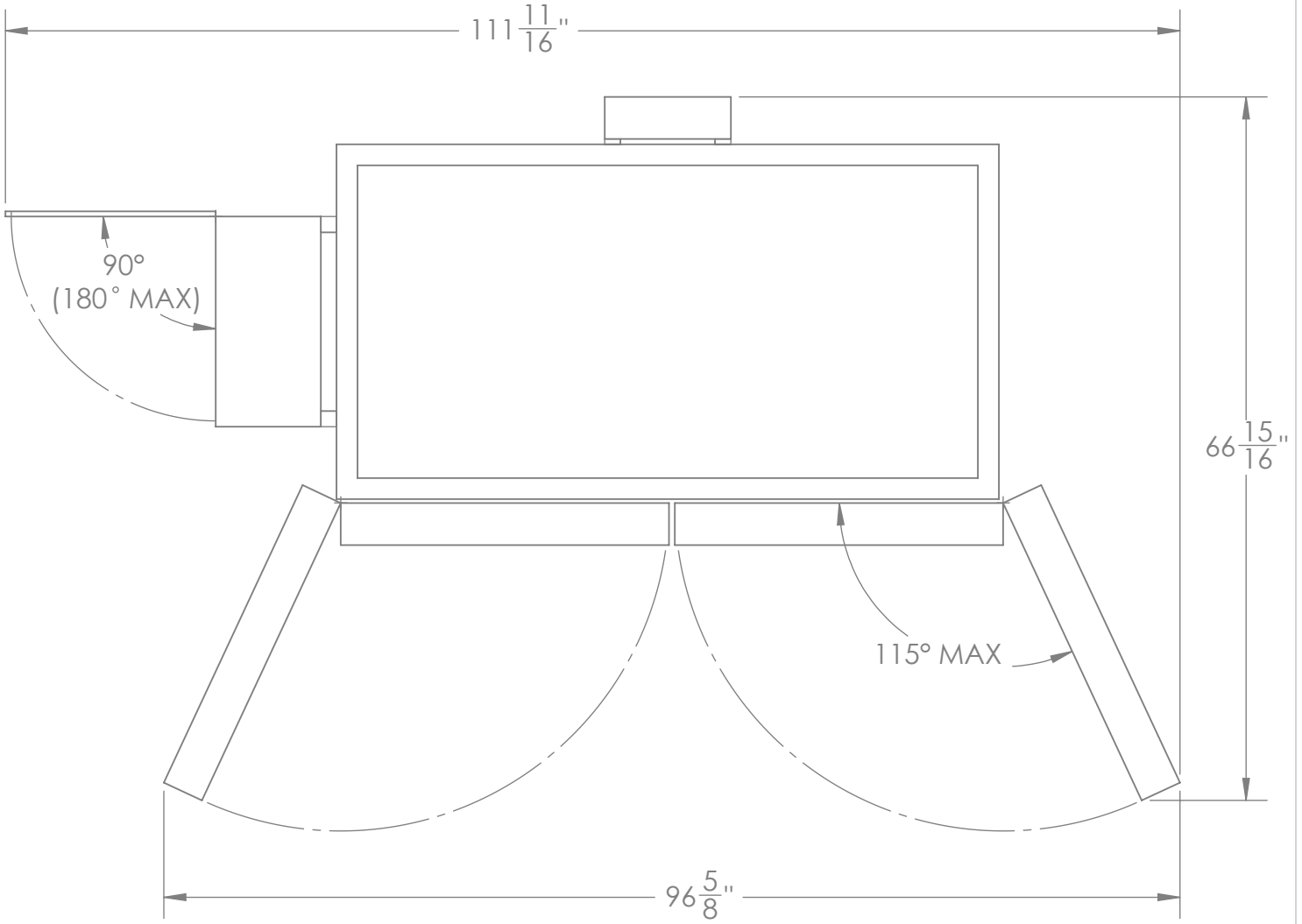
-Exceptions: If fused disconnect is within 6 feet of oven and connected with flexible conduit, oven may be moved away from wall for servicing rear heater coil access.

-Inside Dimensions: 53.5"W x 29"D x 31.5"H



A REV	COPY	SCALE: 1:1	04-22-09	DLB	TITLE FRONT LOADING ANNEALER AF 28.3 STACKABLE
	SHEET 2 OF 3		DATE	DRAWN BY	
PROPRIETARY STATEMENT THIS DESIGN IS COPYRIGHT PROTECTED. ANY UNAUTHORIZED FABRICATION AND SALE OF THIS PRODUCT OR ITS DESIGN IS STRICTLY PROHIBITED, AND VIOLATORS WILL BE PROSECUTED TO THE FULL EXTENT OF THE LAW.		100-C RUSSELL DR. STAR, N.C. 27356 P.O. BOX 96 Ph. 910-428-4111 Fx. 910-428-4123	 WET DOG GLASS	TOLERANCES: FRACTIONS= ± 1/16", .X= ±.1, .XX= ±.03, .XXX= ±.005, ANGLES= ± 1DEG.	
DWG AF 28.3 PURCHASE SPECS					

AF28.3 OPEN DOOR PROFILE



TOP VIEW

A REV	COPY	SCALE: 1:1	04-22-09 DATE	DLB DRAWN BY	T I T L E	FRONT LOADING ANNEALER
	SHEET 3 OF 3					AF 28.3 STANDARD/STACKABLE
<p>PROPRIETARY STATEMENT</p> <p>THIS DESIGN IS COPYRIGHT PROTECTED. ANY UNAUTHORIZED FABRICATION AND SALE OF THIS PRODUCT OR ITS DESIGN IS STRICTLY PROHIBITED, AND VIOLATORS WILL BE PROSECUTED TO THE FULL EXTENT OF THE LAW.</p>		<p>100-C RUSSELL DR. STAR, N.C. 27356 P.O. BOX 96 Ph. 910-428-4111 Fx. 910-428-4123</p>	 <p>WET DOG GLASS</p>	<p>TOLERANCES: FRACTIONS= $\pm 1/16$", .X= $\pm .1$, .XX= $\pm .03$, .XXX= $\pm .005$, ANGLES= ± 1DEG.</p>	D W G	AF 28.3 PURCHASE SPECS