

AF16.1 FRONT LOADING ANNEALER TECHNICAL SPECIFICATIONS

- 11.5 KW (PLEASE SPECIFY VOLTAGE)
- ELECTRICAL CONFIGURATIONS INCLUDE
 - 240 SINGLE PHASE 48 AMPS
 - 208 VAC 3 PHASE 32 AMPS
 - 240 VAC 3 PHASE 28 AMPS
 - 480 VAC 3 PHASE 14 AMPS

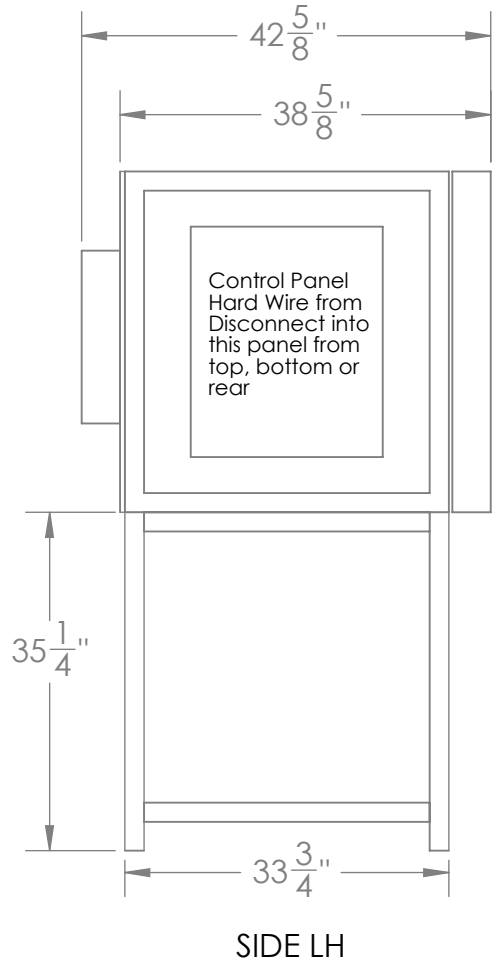
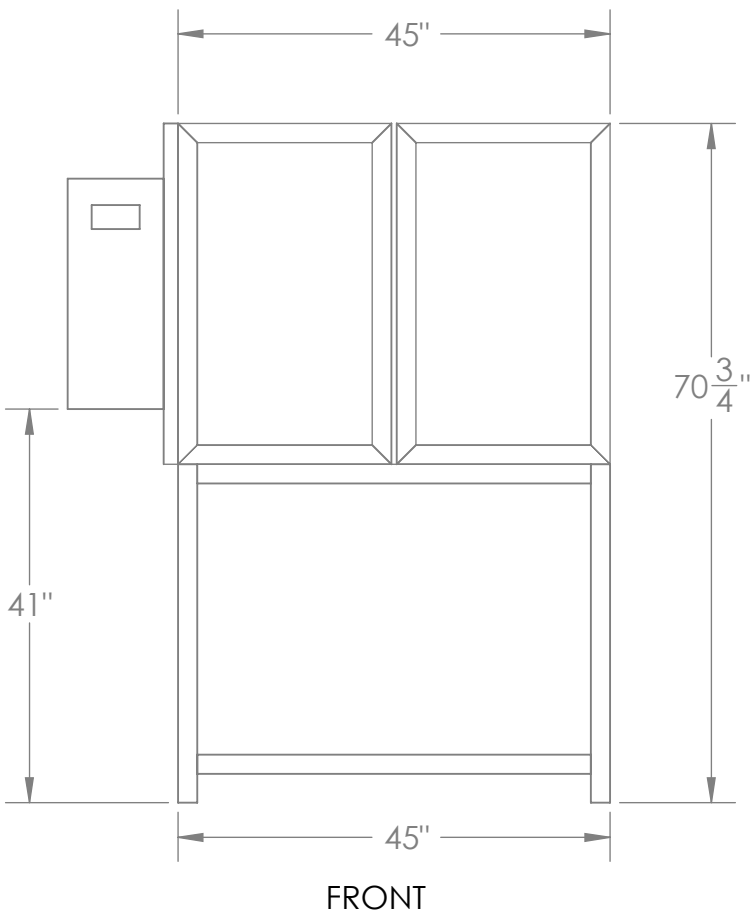
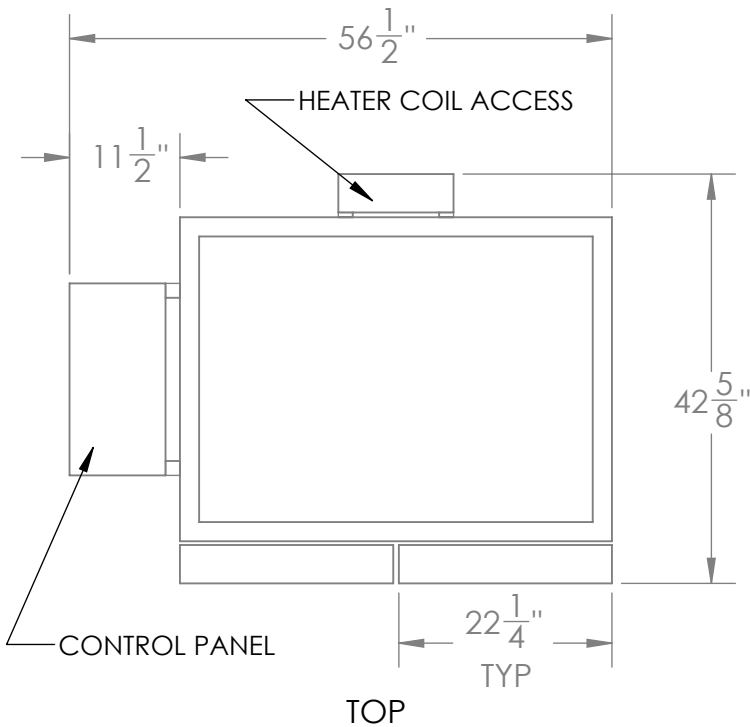
-MAX TEMPERATURE: 1000° F

-WEIGHT: 800 lb
-SHIP WEIGHT: 1050 lb

-CLEARANCE: PROVIDE AT LEAST 36" CLEARANCE TO SIDE OF CONTROL PANEL & 36" TO REAR OF OVEN HEATER COIL ACCESS

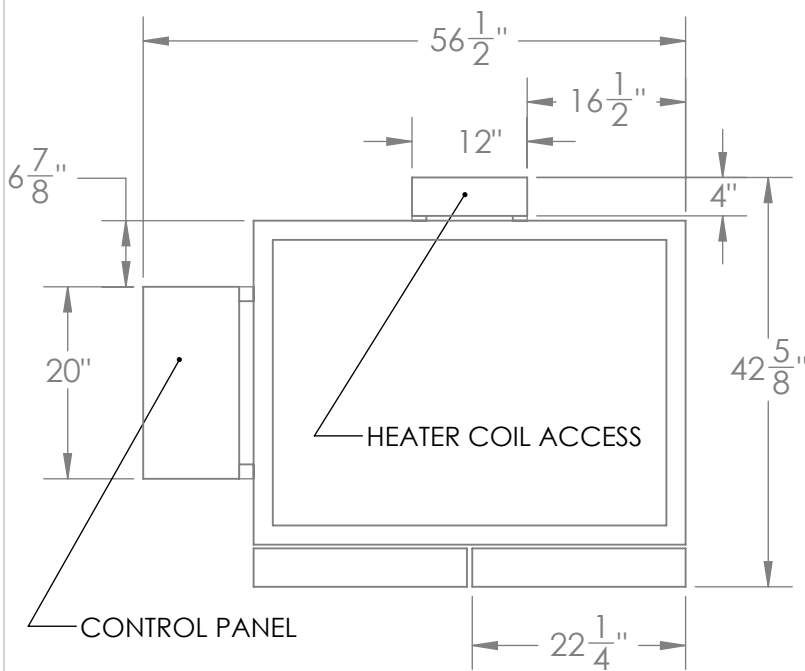
-EXCEPTION: IF FUSED DISCONNECT IS WITHIN 6 FEET OF OVEN & CONNECTED WITH FLEXIBLE CONDUIT, OVEN MAY BE MOVED AWAY FROM WALL FOR SERVICING REAR JUNCTION BOX

-INSIDE DIMENSIONS: 35.5"W x 29"D x 27"H



A REV	COPY	SCALE: 1:20	04-22-09 DATE	DLB DRAWN BY	T I T L E	FRONT LOADING ANNEALER
	SHEET 1 OF 3					AF16.1 STANDARD
PROPRIETARY STATEMENT THIS DESIGN IS COPYRIGHT PROTECTED. ANY UNAUTHORIZED FABRICATION AND SALE OF THIS PRODUCT OR ITS DESIGN IS STRICTLY PROHIBITED, AND VIOLATORS WILL BE PROSECUTED TO THE FULL EXTENT OF THE LAW.		100-C RUSSELL DR. STAR, N.C. 27356 P.O. BOX 96 Ph. 910-428-4111 Fx. 910-428-4123	WET DOG GLASS		TOLERANCES: FRACTIONS= ± 1/16", .X= ±.1, .XX= ±.03, .XXX= ±.005, ANGLES= ± 1DEG.	
					D W G	

OP



AF16.1 FRONT LOADING ANNEALER TECHNICAL SPECIFICATIONS

-11.5 KW (PLEASE SPECIFY VOLAGE)
ELECTRICAL CONFIGURATIONS INCLUDE
-240 SINGLE PHASE 48 AMPS
-208 VAC 3 PHASE 32 AMPS
-240 VAC 3 PHASE 28 AMPS
-480 VAC 3 PHASE 14 AMPS

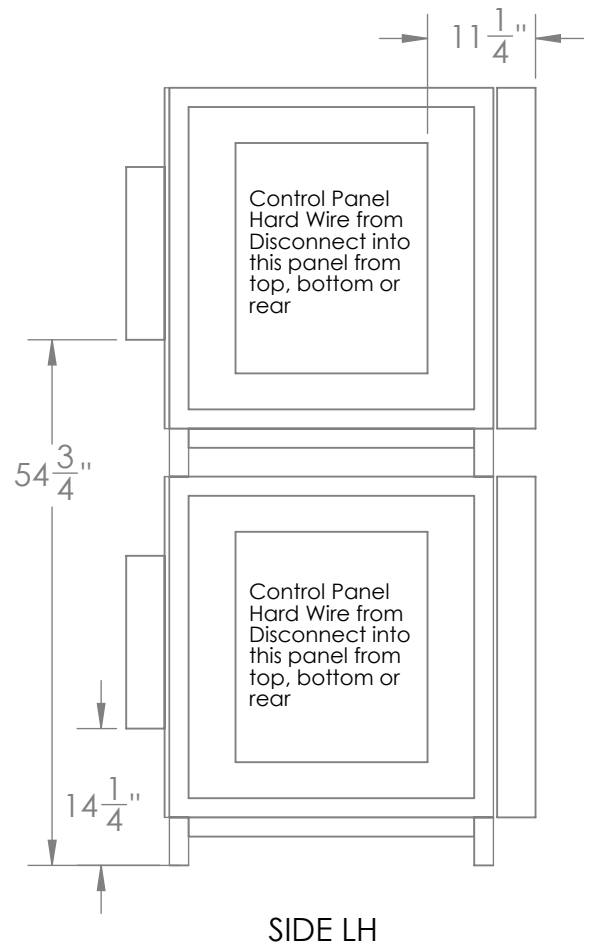
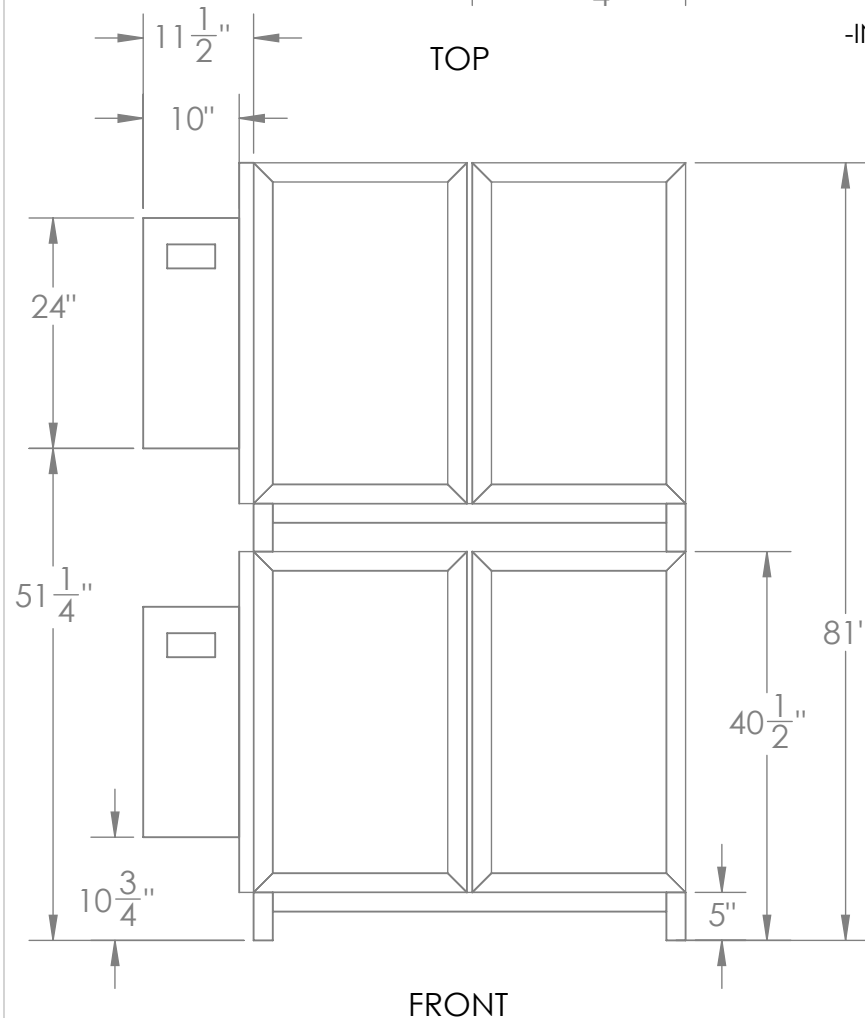
-MAX TEMPERATURE: 1000° F

-WEIGHT: 800 lb
-SHIP WEIGHT: 1050 lb

-CLEARANCE: PROVIDE AT LEAST 36" CLEARANCE TO SIDE OF CONTROL PANEL & 36" TO REAR OF OVEN HEATER COIL ACCESS

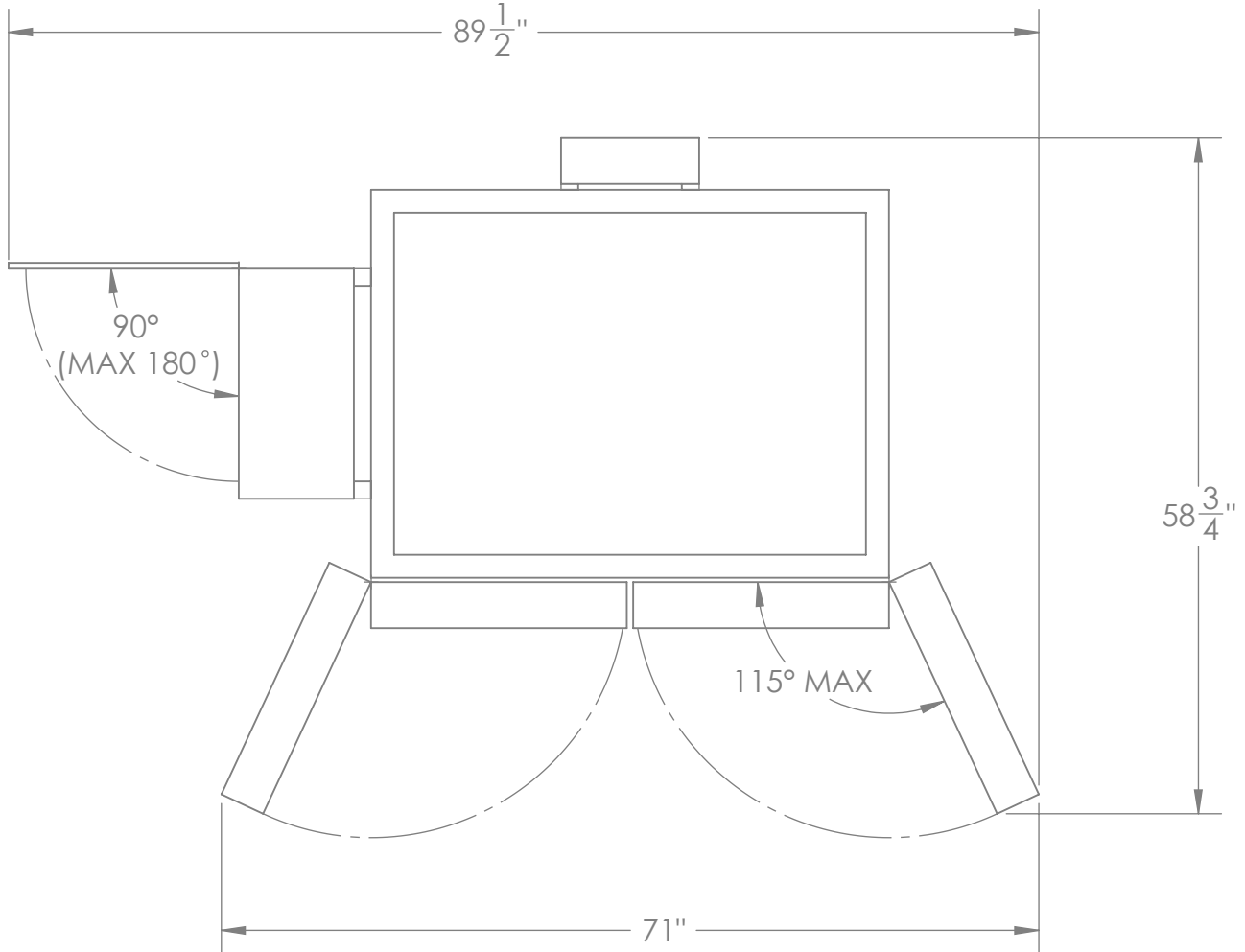
-EXCEPTION: IF FUSED DISCONNECT IS WITHIN 6 FEET OF OVEN & CONNECTED WITH FLEXIBLE CONDUIT, OVEN MAY BE MOVED AWAY FROM WALL FOR SERVICING REAR JUNCTION BOX

-INSIDE DIMENSIONS: 35.5"W x 29"D x 27"H



A REV	COPY	SCALE: 1:20	04-22-09 DATE	DLB DRAWN BY	T I T L E	FRONT LOADING ANNEALER
	SHEET 2 OF 3					AF 16.1 STACKABLE
<p>PROPRIETARY STATEMENT THIS DESIGN IS COPYRIGHT PROTECTED. ANY UNAUTHORIZED FABRICATION AND SALE OF THIS PRODUCT OR ITS DESIGN IS STRICTLY PROHIBITED, AND VIOLATORS WILL BE PROSECUTED TO THE FULL EXTENT OF THE LAW.</p>		<p>100-C RUSSELL DR. STAR, N.C. 27356 P.O. BOX 96 Ph. 910-428-4111 Fx. 910-428-4123</p>	<p>WET DOG GLASS</p>	<p>TOLERANCES: FRACTIONS= ± 1/16", .X= ±.1, .XX= ±.03, .XXX= ±.005, ANGLES= ± 1DEG.</p>		
				<p>D W G</p>		AF16.1 PURCHASE SPECS.

AF16.1 OPEN DOOR PROFILE



TOP VIEW

A REV	COPY	SCALE: 1:1	04-22-09	DLB	T I T L E	FRONT LOADING ANNEALER	
	SHEET 3 OF 3		DATE	DRAWN BY		AF 16.1 STANDARD /STACKABLE	
PROPRIETARY STATEMENT THIS DESIGN IS COPYRIGHT PROTECTED. ANY UNAUTHORIZED FABRICATION AND SALE OF THIS PRODUCT OR ITS DESIGN IS STRICTLY PROHIBITED, AND VIOLATORS WILL BE PROSECUTED TO THE FULL EXTENT OF THE LAW.		100-C RUSSELL DR. STAR, N.C. 27356 P.O. BOX 96 Ph. 910-428-4111 Fx. 910-428-4123	 WET DOG GLASS	TOLERANCES: FRACTIONS= $\pm 1/16$ ", .X= $\pm .1$, .XX= $\pm .03$, .XXX= $\pm .005$, ANGLES= ± 1 DEG.			
						D W G	AF 16.1 PURCHASE SPECS.